

Technical Drawing (1) - Homeworks

Chapter 8 - page 1 (218)

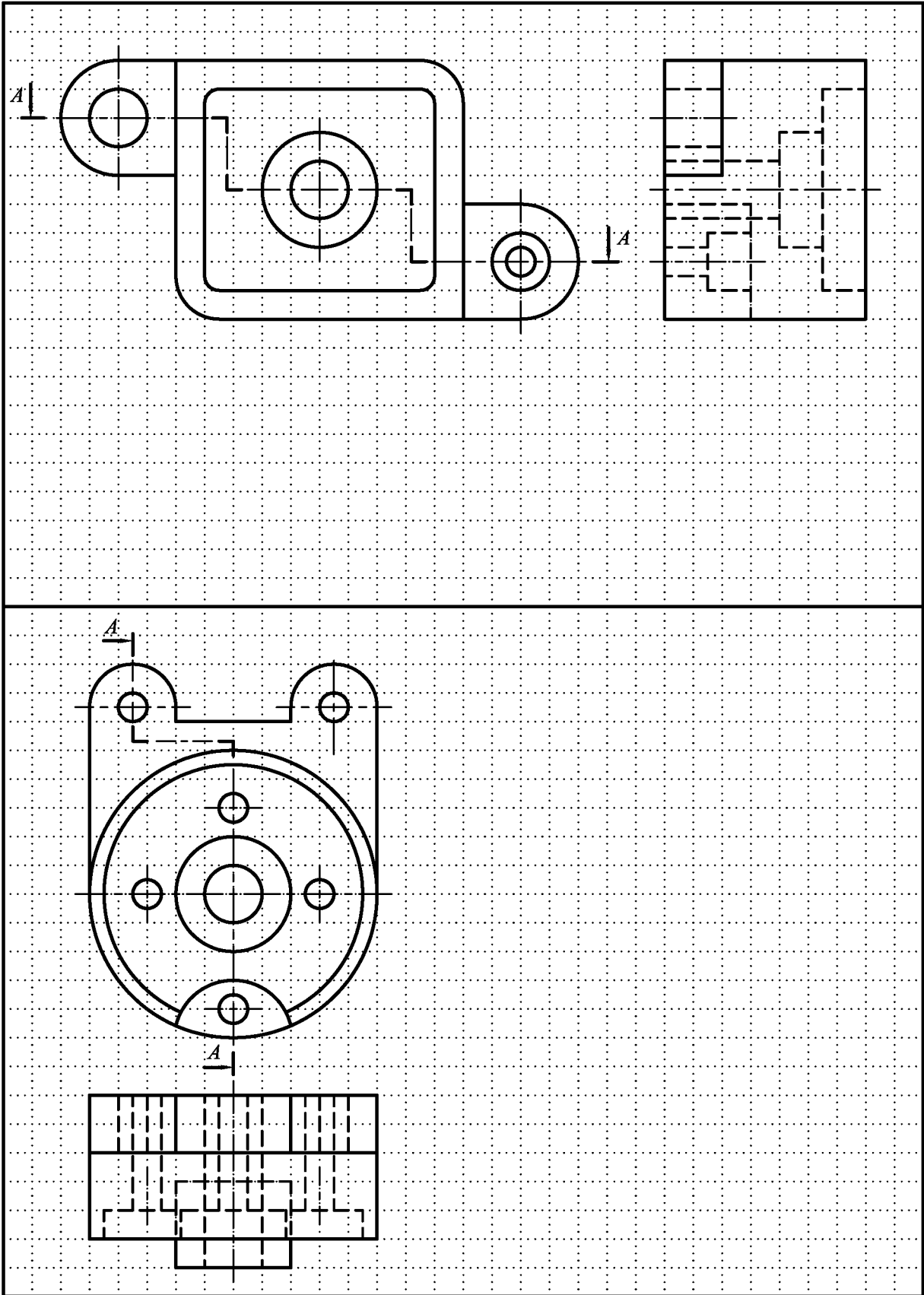
Complete the front sectional view for the object given.

The image contains a technical drawing exercise on a grid background. At the top, an isometric view of a mechanical part is shown. The part consists of a base block with a semi-circular cutout on its top surface. A vertical plate is attached to the right side of the base. A horizontal plate is attached to the top of the base, extending from the left side towards the center. A vertical plate is attached to the top of this horizontal plate, extending from the center towards the right. A semi-circular cutout is also present on the top surface of this horizontal plate. A cutting plane is indicated by a dashed line with arrows pointing to the right, passing through the center of the part. Below the isometric view, the front sectional view is partially drawn. The top half of the drawing shows the profile of the part, with a semi-circular cutout on the right side. The bottom half of the drawing shows the internal features, including a semi-circular cutout on the left side and a semi-circular cutout on the right side. A horizontal dashed line represents the cutting plane.

Technical Drawing (1) - Homeworks

Chapter 8 - page 2 (233)

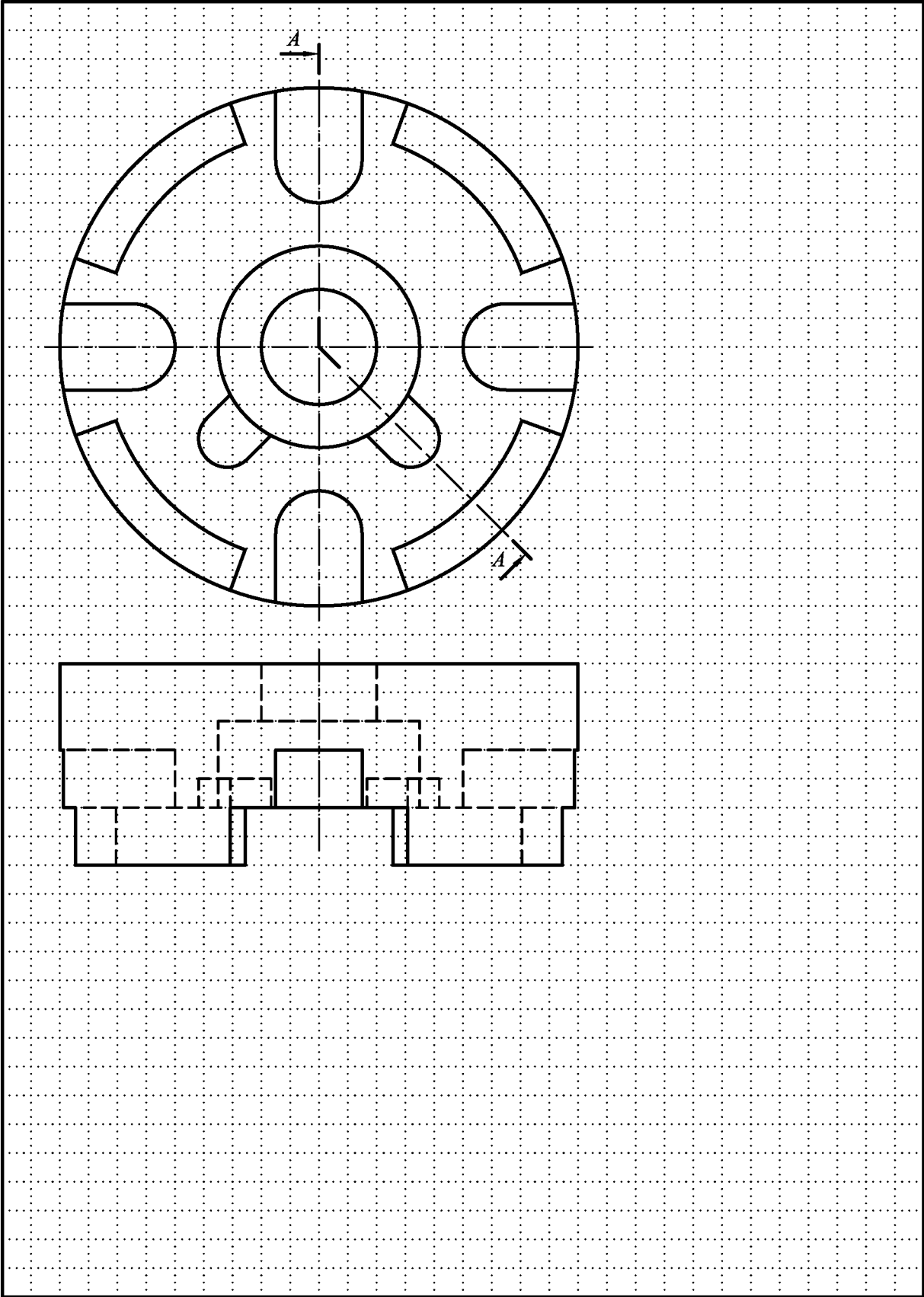
Draw the offset section views A-A for the objects given.



Technical Drawing (1) - Homeworks

Chapter 8 - page 3 (242)

Draw the aligned sectional view A-A for the object given.



Technical Drawing (1) - Homeworks

Chapter 8 - page 4 (256)

Draw the front half section view for the object given.

رسم نیم برش نمای چتری قطعه

